



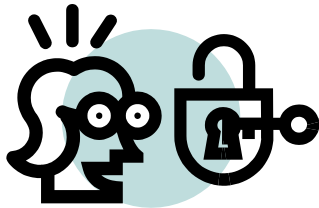
ANIMAL TRACKS



A newsletter for the Duke research community

June 2006

<http://www.duhs.duke.edu>



Security is Not Just for Cops!

Remember when life was simpler—we didn't lock our doors, we could leave things on the counter and they would be there tomorrow, animals were safe and didn't require secure care facilities. With the development of modern society we also have modern security risks. No longer is it safe to leave our laboratories unlocked over the week-end; no longer can we be assured that the medication left on the counter will be where we left it; our animals must now reside behind locked doors with security systems that prevent injury to the animals or insult to our experiments.

The security of our institution's program for animal care and use is in the hands of each and every one of us. To assure that everyone's animals and resources remain secure and safe, we must all follow the following guidelines:

1. Always wear your Duke ID card in plain view when entering an animal care area.
2. When placing a lab coat or paper gown on, assure the Duke ID card is available, in case someone asks you to review it.
3. **DO NOT** allow anyone to enter a secure animal care area with you! **EVERYONE MUST SCAN THEIR OWN DUKE ID CARD THROUGH THE SCANNER! EVEN IF THE DOOR IS OPENED BY ONE SCAN CARD.**
4. Report any suspicious activity to a vivarium supervisor. It may be nothing, or it may be important.
5. Report individuals who do not scan into animal care areas. **EVERYONE WHO ENTERS MUST SCAN THEIR CARD! DO NOT ALLOW ANYONE TO ENTER AN ANIMAL CARE AREA ON YOUR CARD!**

There is NO desire on the part of anyone to make you an Animal Cop! There is a strong desire to engage you and your lab colleagues as eyes and ears. Your greatest contribution is simple—watch your surroundings; assure everyone scans into the facility; report anything 'odd.' Is this important? It depends whether you believe if your research is important. I do.

Wishing you a successful research week,

AAALAC IS COMING

Later this fall, Duke will be visited by the accrediting organization. In the next few issues of Animal Tracks, we will look at what AAALAC is, why it is important to us, and how each of us can prepare our laboratories. So, let us begin ...

What is AAALAC? AAALAC International is a private, non-profit organization that promotes the humane treatment of animals in science through accreditation and assessment programs. AAALAC stands for the "Association for Assessment and Accreditation of Laboratory Animal Care." While there are approximately 10,000 organizations using animals, Duke is one of the 700 companies, universities, hospitals, or government agencies in 27 countries that have earned AAALAC accreditation, demonstrating their commitment to responsible animal care and use, meeting AAALAC standards, and complying with the local, state and federal laws governing animal use.

Why is AAALAC's role important? For some, animal research is a controversial topic. But like others in the animal welfare arena, AAALAC endorses the use of animals to advance medicine and science when there are no non-animal alternatives, and when it is done in an ethical and humane way. AAALAC works with institutions and researchers to serve as a bridge between progress and animal well-being. This is done through AAALAC's voluntary accreditation process in which research programs demonstrate that they meet the minimum standards required by law, and are also going the extra step to achieve excellence in animal care and use. In this way, AAALAC International is where science and responsible animal care connect.

Next month's Animal Tracks will continue our AAALAC preparation! Stay tuned for more details!

Inside this issue:

Security	1
AAALAC	1
Q&A	2
News from DLAR	3
Policy: Tumors in Rodents	3
Policy: Anesthesia Machines	3

Q & A

Question: *Why is my annual protocol review being held up because a member of my lab staff has not attended the Special CO₂ training?*

Answer: All members of the laboratory staff (including principle investigator) who are listed on protocols that utilize CO₂ euthanasia are required to attend one of the IACUC Special Announcements on CO₂.

Annual protocol review will not be approved until all individuals have completed the special announcement on CO₂ euthanasia training. The PI is notified by the IACUC if any individuals need to complete the required training. If the required training is not completed within 30 days, the annual review protocols are returned to the IACUC for action. This action includes removing CO₂ euthanasia as a method of euthanasia from the protocol.

The PI and his/her staff will be required to perform an alternate approved method of euthanasia or have DLAR perform the CO₂ euthanasia for them. Alternatively, if the PI wishes to request the use of CO₂ euthanasia after it has been deleted by the IACUC, the PI should submit an amendment and have all individuals listed on the protocol complete the CO₂ training.



Question: *I need to add and delete personnel from my protocol. Is there an easy way to do this?*

Answer: Yes, there is a simple way to request addition and/or deletion of personnel from an approved IACUC protocol. Simply obtain the “request for personnel addition or deletion to my approved protocol form” from the website at: http://vetmed.duhs.duke.edu/documents/iacuc/pdf/protocol_amendment_form_personnel.pdf

Complete the form and fill out a qualifications sheet for *each* person that you wish to add to your protocol and indicate their skills relative to the specific protocol to which they are being added. Return the completed form and qualifications sheet to the OAWA for review by the IACUC. You will be notified if any clarifications are needed for approval and when the personnel have been added and/or deleted.

Remember: Just because the form has been completed and submitted, does **NOT** mean it has been approved. You will receive an official notice when the personnel are approved to perform animal work.

A Message From Your Colleagues at DLAR

Reporting of Animal Health Abnormalities

In an effort to increase involvement of the DUMC research community in animal welfare and reporting, it is critical that primary investigators and lab personnel understand and utilize DLAR red cards. The DLAR red veterinary examination card is utilized to identify those animals that require veterinary care and assessment. This process is used to ensure that we are providing adequate veterinary care. If you or your staff would like to obtain further information and/or training on this reporting system, please contact Michelle Calkins at 681-1831.

Instructions for Use of Red Veterinary Examination Cards

1. Place your initials, the date and the affected animal's cage card number on the red card.
2. Place the red card on the cage containing the animal(s) that require veterinary examination.
3. Obtain a DLAR Request for Health Check Form from the file station or from a DLAR Supervisor.
4. Complete Section A of the form.
5. Fax the form to DLAR at 684-8610.
6. If the situation is an emergency, page the Veterinary Emergency Pager (970-9410) immediately and wait for a response.

Please **DO NOT** place red cards on animal cages for any reason other than to request a veterinary examination. Please **DO NOT** place red cards on animal cages without completing the necessary paperwork as noted above.

Cage Card ID _____

VETERINARY EXAMINATION

Place this card behind the DLAR cage card to identify animals that need to be examined by a Veterinarian.

Veterinary Emergency Pager:
970-9410

DLAR Initial _____

Date _____

NEWLY APPROVED IACUC POLICIES

Solid Tumors in Rodents

This policy was established to prevent distress or suffering of research animals while providing physiologically stable biological models for cancer research.

The policy is for cumulative tumor burden per animal. If multiple tumors occur (an unusual situation), the total tumor burden cannot exceed the parameters noted below:

Animals showing any of the signs below will be euthanized, unless an exemption is provided by the Duke Attending Veterinarian or the IACUC:

- Overall tumor volume exceeding:
 - Mice: 2000 mm³ in size (which is roughly 10% baseline body weight), or
 - Rats: 5000 mm³ in size.
 - For the basis of this policy, tumors may be measured using the following formula:
TV = [(Width)² x Length] / 2
- Tumors that are ulcerated. If an exemption is provided for this condition, then the affected animals are required to be single housed (may require protocol amendment and/or alternate environmental enrichment or medical treatment),
- Tumors where the animals chew on the lesion or pay undue attention to the ulcer,
- Tumors that interfere with 'normal' mouse function (e.g. eat, drink, or ambulate),
- Tumor burden that is greater than 10% of the baseline body weight (mice) or 5% of the baseline body weight (rats).
- Other clinical signs that require veterinary intervention and are suggestive of tumor related disease such as metastases or ascites are extant:
 - Weight loss greater than 15%,
 - Significant abdominal distension, especially when it begins to compromise respiratory ability of animal,
 - Hunched posture with easily visible vertebral bodies,
 - Failure to eat or drink,
 - Absence (or abnormal) of fecal or urine output,
 - Rough hair coat,
 - Reluctance to move or abnormal gait,
 - Discharges or hemorrhage,
 - Abnormal behavior or vocalizations.

For a complete copy of this Duke IACUC policy, please refer to the website at: http://vetmed.duhs.duke.edu/documents/iacuc/pdf/policy_on_tumor_burden_in_rodents.pdf

General Inhalational Anesthesia Machine/Vaporizer/Waste Gas Maintenance and Calibration

Active delivery of general inhalational agents for animals housed at Duke University will be provided with properly functioning anesthetic equipment which will assure their health and well-being during the anesthetic event.

The Guide for the Care and Use of Laboratory Animals details basic care requirements for animal use. This policy provides guidance regarding anesthesia machine/vaporizer calibration and maintenance. Manufacturer recommendation soften range from one to three years depending on the model.

Each piece of equipment involved in the delivery of inhalant anesthetics and the removal of waste gases must be evaluated regularly to assure its proper function and integrity. Tubing, hoses, and rubber items are common areas of concern.

This policy covers anesthesia machines and vaporizers, waste gas scavenging systems, and documentation of validation and service. For a complete copy of this policy, please refer to the website at: http://vetmed.duhs.duke.edu/documents/iacuc/pdf/policy_on_vaporizer_calibration_&_maintanance.pdf



Upcoming Events

June 26	SC deadline
July 6	SC meeting
July 10	New protocol deadline
July 10	SC deadline
July 13	Brown Bag Seminar
July 20	SC meeting
July 24	SC deadline
July 27	IACUC meeting
August 3	SC deadline

SC= Significant change

OAWA's Brown Bag Seminar

Thursday, July 13th, 2006

Noon – 1 p.m.

Bryan Research Building: Room 103

Mr. Bill Wade, LVT, LATG
Vivarium Operations Manager
will be presenting:



“Day to Day Challenges of Vivarium Operations”

This informational session will serve to provide you and your laboratory staff with the information necessary to work with the DLAR staff in meeting your needs, as well as an open forum for which we encourage you to bring questions and concerns about policies and procedures surrounding daily operations within the various vivaria on campus. This is an opportunity to discuss ideas on how DLAR can better assist you and vice versa.

Some of the topics that will be covered will include:

- providing emergency contact information to DLAR for each laboratory and why this is important,
- the necessity for and process of orientation at each facility,
- the proper channels to go through to gain HID card access to facilities,
- animals requiring “special needs” (husbandry, unique processes within protocols, animal transfer policies), and
- PI laboratory staff providing animal care vs DLAR husbandry staff.

Please bring your questions and concerns, as well as ideas to help solve current problems that you may be encountering. We want to find ways to improve all aspects of our program, and encourage your input and ideas on how to best accomplish this.

The presentation will be on **Thursday, July 13th, 2006 from noon to 1 p.m.**

The session will be held in room **103 of the Bryan Research Building**, located at 421 Research Drive, on Duke University's West Campus.

Attendees are encouraged to bring a lunch.

OAWA will provide drinks and desserts.

Please plan on arriving prior to noon in order to get refreshments, sign in, and be seated.

For those who will be coming from off campus, driving directions and parking information can be found at the following link: <http://neuro.duke.edu/Links/map.htm>